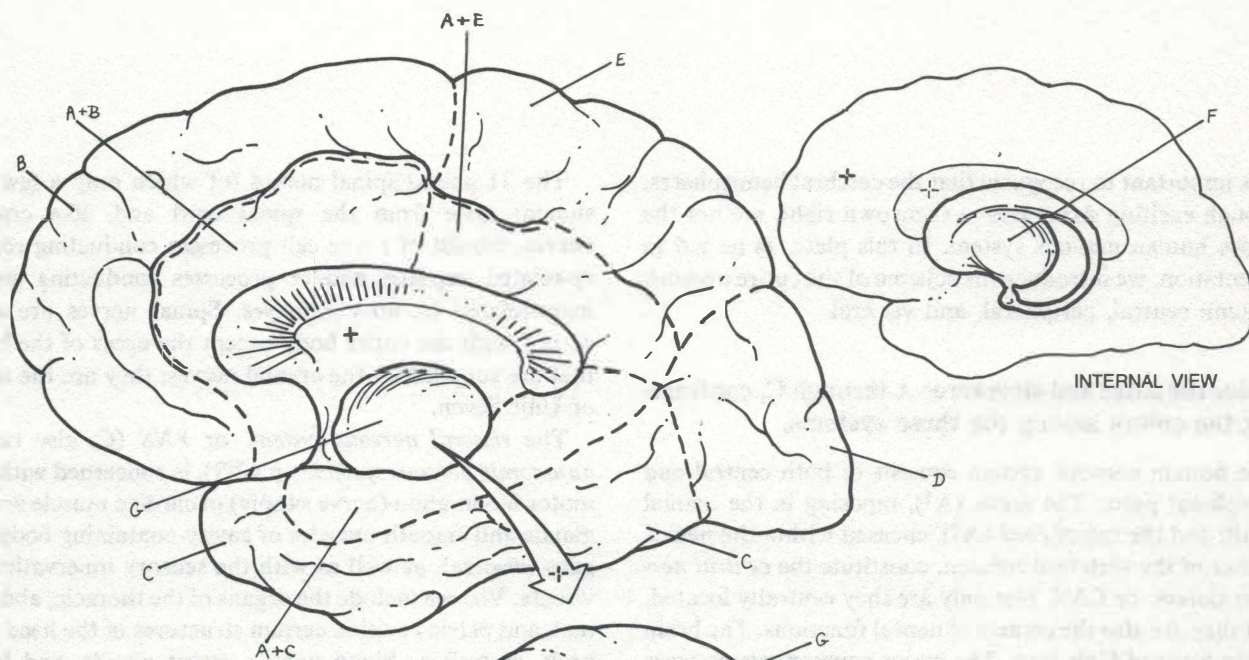
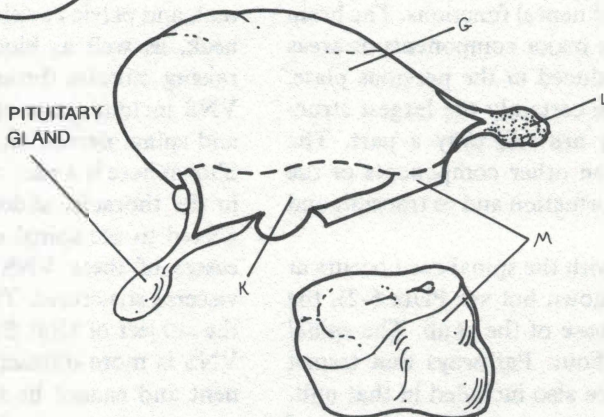


INTRODUCTION TO BRAIN STRUCTURE II.



CEREBRAL HEMISPHERE ★
 FRONTAL LOBE, B
 TEMPORAL LOBE, C
 PARIETAL LOBE, E
 OCCIPITAL LOBE, D
 LIMBIC LOBE, A
 BASAL GANGLIA, F



UPPER BRAIN STEM ★
 THALAMUS, G
 HYPOTHALAMUS, K
 PINEAL GLAND, L

MIDDLE BRAIN STEM ★
 MIDBRAIN, M

LOWER BRAIN STEM ★
 PONS, H
 MEDULLA, J
 CEREBELLUM, I
 SPINAL CORD, N

